

ECD



ECD...SO MUCH MORE.

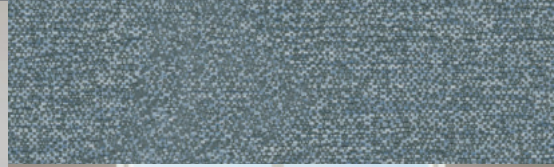
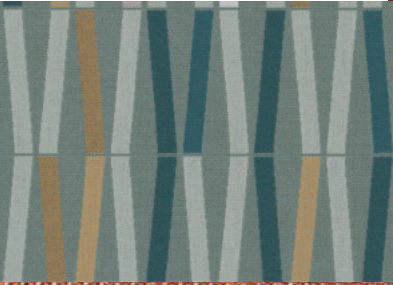




Table of Contents

- 04 WELCOME TO ECD
- 05 ERGONOMICS

Our Chairs

- 08 ALIVIAR
- 10 CONTORNO
- 12 INMOTION
- 14 KYOS
- 16 LAB MINI
- 18 LAB PRO
- 20 LAGOS
- 22 LOGIXX
- 24 MARVELLA
- 26 METROPOLIS
- 28 NUBÉ
- 30 PURSUE
- 32 QT
- 34 QTU
- 36 QUEST
- 38 QUEST LITE
- 40 RENAISSANCE
- 42 TRUDEAU
- 44 TUSCANY
- 46 VIVÉ

So Much More...

- 06 OUR MISSION TO STAY GREEN
- 07 OPTIONS AND FEATURES

We are ERGONOMIC COMFORT DESIGN

Ergonomic Office Seating. Superior Comfort. Thoughtful Design.

At **ECD**, our name defines everything we do. Ergonomic, Comfort, Design are not just words. They are the foundation of every chair we build. An ergonomic office chair should actively support health and well-being. Comfort must go beyond adjustability to deliver all-day support. And design matters—because even the most ergonomic chair must complement your workspace. **ECD** ergonomic task seating delivers all three, and **SO MUCH MORE.**

ECD task chairs are so much more than just office seating—they are a complete workplace solution. We stand behind every product with industry-leading service and support, ensuring long-term performance throughout our 12-year warranty. Unlike standard office chair manufacturers, **ECD** offers so much more...like multiple seat sizes and cylinder height options, allowing our ergonomic seating to accommodate users from the 1st through the 99th percentile. The result is a truly inclusive office chair designed for real people and real work environments.

Based in Corona, California, **ECD** is a certified minority-owned business with a legacy of innovation. Founded in 1994, **ECD** has remained committed to creating ergonomic office chairs that promote healthier, more productive workplaces. This dedication has made **ECD** a trusted partner and the preferred choice for corporate office seating programs across multiple industries.

ECD—Ergonomic office seating designed for comfort, performance, and longevity.

ECD... SO MUCH MORE.

Complete BACK SUPPORT

Your back consists of four unique sections, each of which should be supported properly by a great chair allowing for all day comfort.

CERVICAL SUPPORT

Cervical support (headrest) can be part of an effective management of neck muscle weakness to help prevent complications of pain and injury.

SACRAL SUPPORT

This is the lowest section of your spine, the section of your back that supports body weight. ECD addresses support of your sacral region with a well-molded seat with three inches of high quality, high density foam with an option of adding a layer of memory foam for additional comfort and support.

LUMBAR SUPPORT

ECD's built-in lumbar support relieves stress from your lower back muscles by ensuring you maintain proper posture even when you must remain seated for an extended period.

THORACIC SUPPORT

ECD's thoracic foam in the upper back supports the spine between the shoulder blades, encouraging a "shoulders back" posture.

How ergonomics AFFECT YOU

Not everything that has an "ergonomic" label is a useful product; some are poorly designed and ultimately do more harm than good. Even well-designed ergonomic products can cause problems when used incorrectly.

As the pace of change quickens in office technology and workers spend more and more hours sitting in front of a computer monitor, injuries are increasing at an alarming rate.

Over the past decade, ECD has worked closely with ergonomists, physical therapists, risk managers and health and safety consultants to create seating products that are part of the solution, not part of the problem.

ECD was one of the first to install seat sliders on chairs, width and height adjustable arms, thoracic support in the back cushions, memory foam in the seat cushions and offer petite and large scale seating solutions for smaller and larger workers.

Our mission

TO STAY GREEN

Over the years, Ergonomic Comfort Design, Inc. has established its name in the office furniture market by providing one of the most comfortable, high-quality, and functional ergonomic chairs in the industry. We also pride ourselves in our efforts of producing safer products that follow the guidelines of a cleaner and healthier indoor air quality for a better office environment.

MATERIAL SOURCING

As part of our safety process, we require a written certification from our main suppliers confirming that their components are free of harmful chemicals.

FABRIC

We have partnered with various textile companies to bring our customers options in recyclable fabrics.

MANUFACTURING

ECD uses manufacturing processes that are friendly and non-threatening to our environment. Materials used in the production process contain no Ozone Depleting Substances (ODSs), chlorofluorocarbons (CFCs), or hydrochloroflourcarbons (HCFCs). Our systems are in full compliance with EPA requirements concerning Clean Air and Clean Water. We recycle scrap metal, paper, and corrugated waste. We work diligently with our local power company to determine effective ways to conserve energy in our operations.

Sustainability

We believe in creating a brighter future by prioritizing eco-conscious practices in everything we do. From our products to our processes, sustainability is at the core of our mission. Join us on our journey towards a greener tomorrow as we strive to make a positive impact on the planet, one step at a time.

The ANSI/BIFMA e3 Furniture Sustainability Standard is a comprehensive, multi-attribute standard for sustainability in the office furniture industry. The standard provides direction to manufacturers in the areas of materials, energy and atmosphere, human and ecosystem health, and corporate social responsibility. Third party certification (called LEVEL®) is based on an audit of the corporation, the manufacturing site, and the specific products. ECD's products are LEVEL 2 and can contribute to LEED and WELL projects.

ECD used the following methods for its product grouping approach for LEVEL certification:

- The combination of base product and options with the

highest volume of sales or anticipated highest volume for a new product within the product category/subcategories as defined in Annex A. It is not necessary to consider the full range of options available on the representative sample for purposes of the evaluation. Notwithstanding, all products of a family group are expected to meet the intent of the credits.

- Worst case sample selection as defined in the BIFMA LEVEL Standard (v 2019) – Section 4.

ECD is proud to have earned Indoor Air Quality (IAQ) certification, a recognition that reflects our commitment to creating healthier indoor environments. This certification confirms that our practices meet established standards for maintaining low levels of indoor pollutants and supporting a safe, healthy breathing environment. By emphasizing reduced volatile organic compounds (VOCs), proper ventilation, and careful control of contaminants such as mold and chemical emissions, ECD helps ensure that the spaces we work on promote comfort, safety, and long-term well-being for occupants.

Options and Features

ARMRESTS



EURO PIVOT ARMREST



4D ARMREST



CONFERENCE C ARMREST



FOLD-AWAY ARMREST



STANDARD HEIGHT
ADJUSTABLE

ADDITIONAL ACCESSORIES



TAIL BONE CUTOUT



MEMORY FOAM



ADJUSTABLE LUMBAR
SUPPORT

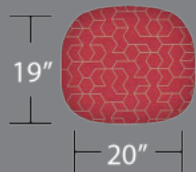


STOOL KITS

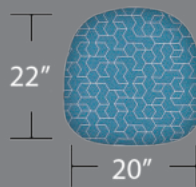
SEAT SIZES



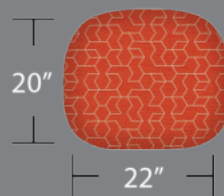
PETITE



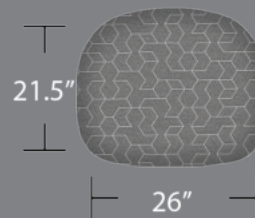
STANDARD



TALL



LARGE



EXTRA LARGE

CYLINDERS



LOW
#1

3" RANGE



INTERMEDIATE
#2

4" RANGE



MID
#3

5" RANGE



LOW STOOL
#4

8" RANGE



HIGH STOOL
#5

10" RANGE

Aliviar



Available in two back heights and customizable with a variety of control mechanisms and arm options, Aliviar is the ideal solution for task-intensive and specialty environments where advanced ergonomic performance is essential.



Inspired by the Spanish word for relieve, Aliviar is designed to do exactly that, deliver targeted thoracic support for your upper back. Unlike standard seating, Aliviar provides a unique level of comfort and relief that keeps you focused and energized throughout the day.



Contorno



Contorno Series is a high-performance task chair engineered to deliver exceptional comfort, ergonomic support, and refined modern style.



Designed for today's dynamic workspaces, Contorno features an innovative, highly flexible silicone back that naturally conforms to the contours of your spine, providing outstanding lumbar support and promoting healthy posture throughout the day.

InMotion





InMotion's sleek design and effortless mobility make it the go-to seating solution for modern workspaces.



InMotion redefines comfort and performance in stacking and nesting chairs. Featuring a flexible back that moves with you and a smooth-gliding seat that adapts to every posture, InMotion delivers ergonomic support for all-day comfort in meeting rooms, training spaces, and collaborative environments. Its sleek design and effortless mobility make it the go-to seating solution for modern workspaces.

Kyos





Discover Kyos seating. A durable, lightweight, and stackable chair solution perfect for modern offices, meeting and conference rooms, exam spaces, and waiting areas. Designed for versatility and comfort, Kyos chairs combine practicality with contemporary style.

Lab Mini



Compact, durable, and purpose-built for technical workspaces, the Lab Mini chair delivers smart design in a small package. Its lightweight frame and efficient footprint make it ideal for labs, production areas, and collaborative stations where every inch counts.



The Lab Mini combines ergonomic comfort with modern styling for today's most demanding environments.

Lab Pro





Lab Pro is a high-performance laboratory chair engineered for comfort, durability, and precision. Designed for professionals who spend long hours in technical or research environments, Lab Pro features advanced ergonomic support, adjustable controls, and premium materials that promote proper posture and all-day comfort. It's the ideal seating solution for modern labs that demand both functionality and style.

Lagos



The Lagos Series blends modern design with ergonomic functionality, offering premium comfort at an accessible price.



Each chair features integrated lumbar support and is available in multiple sizes to suit a variety of users and workspaces. With customizable options for foam density, arm styles, and control mechanisms, the Lagos Series delivers tailored comfort, flexibility, and lasting performance for any office or professional environment.

Logixx

Engineered for endurance and versatility, the Logixx chair delivers exceptional ergonomic support for demanding 24-hour work environments.



Designed for task and management applications, Logixx features a durable outer poly back shell that protects against daily wear while maintaining a sleek, modern profile. With advanced ergonomic adjustments and all-day comfort, it's the perfect choice for control rooms, dispatch centers, and high-intensity offices.



Marvella

Elevate your environment with the Marvella lounge chair. A sophisticated blend of comfort and contemporary design. Ideal for offices, executive suites, and welcoming lobbies.





Marvella introduces a tranquil elegance to any space. Crafted with clean lines and sculpted contours, Marvella strikes the perfect balance between modern style and restful relaxation. Finished in soft upholstery and built for lasting comfort, Marvella lounge chairs make a statement quietly and beautifully.



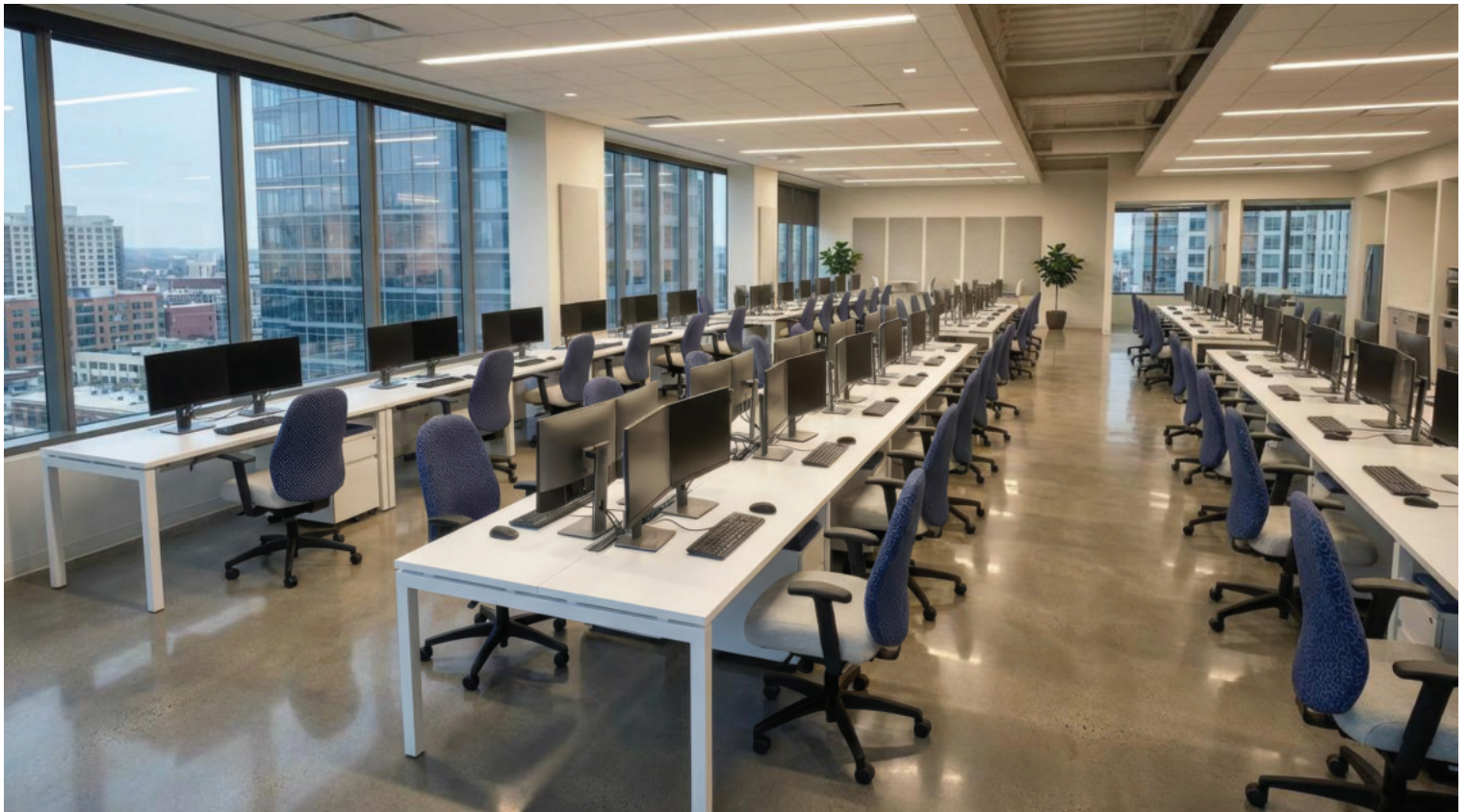
Metropolis





The Metropolis Series is engineered for strength, comfort, and endurance in the most demanding 24-hour work environments.

Originally developed in collaboration with health and safety professionals and ergonomists, this heavy-duty seating line is built to perform in emergency response centers, dispatch rooms, and continuous use operations.



Available in large and extra-large sizes, Metropolis chairs are designed to accommodate users up to 450 pounds, delivering exceptional ergonomic support, long-lasting durability, and reliable comfort around the clock.

Nubé





Nubé is a stunning upholstered and mesh ergonomic chair designed to move with you throughout the workday. Its breathable mesh design adapts effortlessly to your body, offering personalized support whether you're focused at your desk, leading a meeting, or collaborating with your team. Engineered for comfort, flexibility, and all-day performance, Nubé combines modern elegance with advanced ergonomic innovation to create the ultimate seating experience for today's dynamic workspaces.

Pursue

The Pursue Series delivers the perfect balance of contemporary style, ergonomic support, and affordability.





Designed to meet the needs of modern workspaces, each chair features adjustable lumbar support and comes in multiple sizes to fit a wide range of users. With customizable options for foam density, arm styles, and control mechanisms, the Pursue Series offers personalized comfort and dependable performance making it a smart choice for offices, meeting rooms, and collaborative environments.

QT



QT features a fully adjustable design including seat depth, back tilt, back angle, and height-adjustable arms. Its integrated lumbar support and breathable mesh back promote all-day comfort, while the clean, contemporary aesthetic makes it a perfect fit for modern offices and collaborative workspaces.

The QT Series is a sophisticated ergonomic seating solution designed to perform seamlessly in both task and conference environments. Engineered for superior comfort and personalized support.



QTU



Designed for versatility, this chair offers extensive adjustment features; including seat depth, tilt, lumbar support, and arm customization, making it perfectly suited for both task and conference environments. With its modern aesthetic, premium materials, and long-lasting comfort, the QTU Series brings style, quality, and value to any workspace.



The QTU Series delivers the same exceptional ergonomic performance as the QT Series, with the added comfort and sophistication of a fully upholstered back.



Quest



The Quest Series represents the pinnacle of ergonomic seating innovation: a result of ECD's collaboration with a leading corporate ergonomic team to create the ultimate in comfort and support.





Designed to promote healthy posture and proper spinal alignment, the Quest Series delivers exceptional back support that adapts to your body's natural movement. With its refined craftsmanship, advanced ergonomic technology, and sleek modern design, Quest sets a new standard for premium office seating.

Quest Lite



With its thoughtful design and user-friendly adjustments, Quest Lite offers lasting comfort and functionality for all-day performance in any workspace.



The Quest Lite chair delivers exceptional ergonomic comfort at an accessible price point. Inspired by the premium Quest Series, it features adjustable arms, adjustable lumbar support, and a standard adjustable-height back designed to promote proper posture and upper-back (thoracic) support.

Renaissance



The Renaissance Series redefines executive seating with a perfect blend of timeless elegance and modern ergonomic innovation. Crafted with luxurious materials and plush cushioning, this premium chair collection delivers exceptional comfort and posture support for long hours of work. Designed to elevate any executive office, the Renaissance Series embodies sophistication, performance, and enduring style — a true evolution of classic design.



Trudeau



The Trudeau Series brings together innovation, comfort, and contemporary design in one sophisticated chair. This series features a plush memory foam seat, supportive thoracic foam back cushion, and a precision-engineered synchronized control mechanism for seamless movement. Combining sleek European styling with exceptional functionality, the Trudeau Series delivers unparalleled comfort and performance, making it one of our most popular executive and task seating collections.



Tuscany



Designed for executive offices and conference rooms, Tuscany chairs feature advanced ergonomic adjustments that promote proper posture and lasting support, embodying luxury, performance, and enduring style.

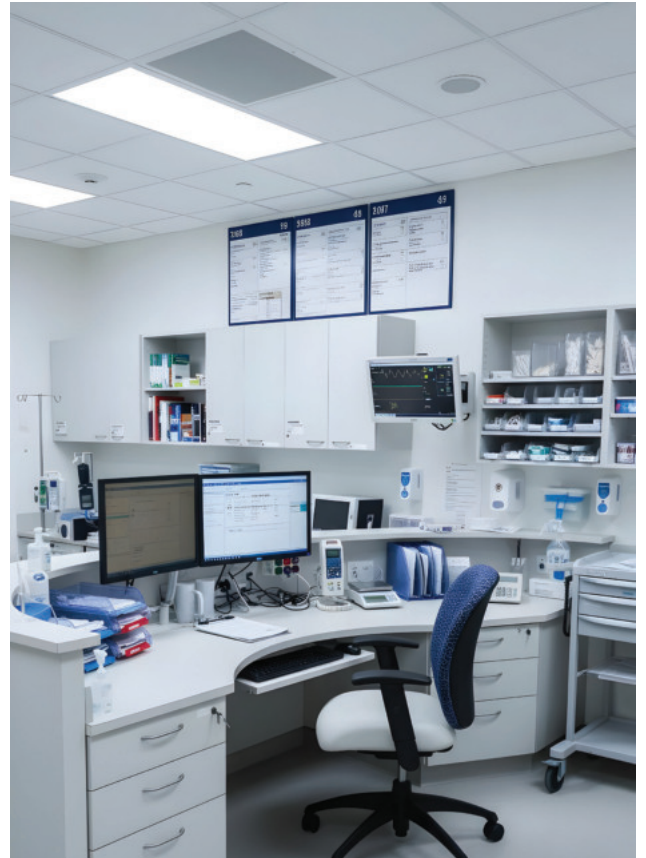




The Tuscany Collection captures the perfect balance between timeless elegance and modern ergonomic innovation. With its refined lines, premium materials, and exceptional attention to detail, this collection delivers both sophistication and comfort.



Vivé

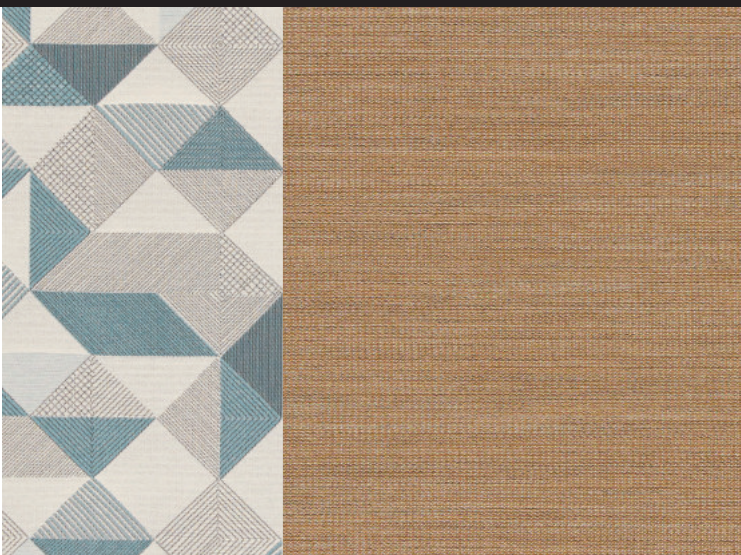


Vivé features an advanced multi-position mechanism that effortlessly adjusts to every movement and posture. The result is a chair that enhances focus, promotes healthy sitting, and elevates any office with its sleek, contemporary design.



Vivé is a modern ergonomic chair designed to deliver unmatched comfort, adaptability, and style in the workplace. Engineered with precision foam cushioning for optimal support.





SO MUCH MORE.

ECD ERGONOMIC COMFORT DESIGN

9140 Stellar Ct. # B
Corona, CA 92883

(951) 277-1558

www.ecdergo.com