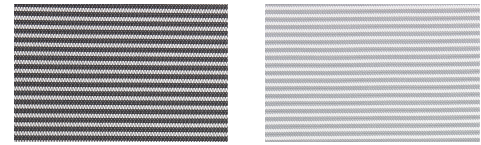


PURSUE

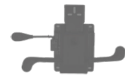
Pursue series is a brilliant combination of design and function at an affordable price. Pursue comes standard with an adjustable lumbar support and adjustable height arms. Like most ECD seating,

Pursue is available in multiple sizes with additional options for foam, arm and mechanisms for enhanced flexibility. Pursue is offered in both black and grey mesh.

MESH COLORS



CONTROLS



JSLT CONTROL
Easy 2 lever weight adjusting control with standard slider. Standard Cylinder is #2, 350 pound weight capacity.



SNS CONTROL
Easy 2 Lever Weight Adjusting Control. Standard Cylinder is #2, 350 Pound Weight Capacity.

ARMS



FA ARM

Fold away arm with height and width adjustments.



AT ARM

Height adjustable with available width adjustment.



CC ARM

Padded urethane conference arm.



EP ARM

360 button controlled pivoting arm pad with height and width adjustments.



4D ARM

Height and width adjustable with pivoting arm cap. Arm cap also moves forward and backward in and out.



GREY ARM

Height/width adjustable with pivoting arm cap. Arm moves forward, backward, in and out.



Pursue





The Pursue Series delivers the perfect balance of contemporary style, ergonomic support, and affordability.



Designed to meet the needs of modern workspaces, each chair features adjustable lumbar support and comes in multiple sizes to fit a wide range of users. With customizable options for foam density, arm styles, and control mechanisms, the Pursue Series offers personalized comfort and dependable performance making it a smart choice for offices, meeting rooms, and collaborative environments.